



Dolphin Yachts

INTERNATIONAL YACHT BROKERS

Dolphin Yachts S.L.

Club de Mar

07015 Palma de Mallorca

Spain

info@dolphin-yachts.com



Camper & Nicholson's Classic

Builder:	Camper & Nicholson's	LOA:	34.50m (113'2")
Model:	Classic	Beam:	5.46m (17'9")
Year:	1933	Draft:	2.90m (9'5")
Construction:	Wood	Fuel:	2.518 Litres
Accommodation:	7 berths in 3 cabins	Water:	3.280 Litres
Designer:	Charles Nicholson	Engines:	1 x 360hp MAN
Displacement:	107000 kg	Keel:	Long

550.000 € VAT exempt



ENGINE:

1 x 360hp MAN (2014)

Engine Hours: 1900 aprox.

SPEED:

12 knots aprox.

CRUISE RANGE:

1200 nautical miles

CAPACITIES:

Fuel: 2518 Litres

Water: 3280 Litres

Holding: 500 Litres

MECHANICAL EQUIPMENT:

MAN diesel engine (2014) Consumption at 10 knots 17 litres/hour.

Hundersted 4-blade prop with variable pitch

Double ram hydraulic steering (1998)

Fuel capacity: 4 tanks (2,518 litres in total)

Water capacity: 6 tanks in s/steel (3,280 litres in total)

Grey water: 500 litres (with automatic/manual discharge)

Black water: 320 litres (with manual discharge)

12V/24V/220V including shore supply

10 Batteries (2026)

12V/24V DC lighting & instruments

24V/220V sockets in all cabins, including toilets.

22V/110V shaving sockets in heads.

2 x Victron 80A chargers

2 x Victron 850W invertors

Kohler 3-phase night generator (1994) with own 12V starter battery

Perkins Sabre 25kW 3-phase generator with own 12V starter battery

5kW/220V mono-phase travel power driven from main engine (2012)

Watermaker 220 litres/hour

Hot water tank/calorifier 100 litres (2014)

Dual freshwater pressure pumps with hydro cells 24V (3)

Main reverse cycle air conditioning with independent air handlers in each cabin all thermostatically controlled.

ACCOMMODATION:

Berths: 7

Cabins: 3

Head: 3

Crew Berths: 6

Crew Cabins: 2

The accommodation of SAHARET is a particular feature of the vessel and includes much of the original period joinery and paneling in polished walnut and teak. The lower saloon with the ambience of a gentleman's club adjoins the master en-suite stateroom and can be closed off to provide a private suite. The deck-saloon, bright and airy is a particularly pleasant place to socialise, enjoy a good book and admire the scenery. In total SAHARET has three en-suite double cabins, plus two further separate crews' cabins and in total berths for thirteen.

In more detail, the accommodation affords:

Master cabin

Very spacious cabin, fully carpeted with white enamel, varnished teak trim, teak doors & drawers. Full



size double bed, large hanging wardrobe & drawers, dressing table, chair, glass cabinets & book shelves. Large skylight above. En-suite designed with Corian (2014), shower, wash basin & electric Superflush toilet, with plenty of storage lockers, etc.

First guest cabin

Two single beds, book shelves, wardrobe & drawers to starboard side. En-suite designed in Corian (2014), shower, wash basin & electric Superflush toilet, with plenty of storage space.

Second guest cabin

Double bed, plus additional single bunk bed, with wardrobe & drawers to port side. En-suite designed in Corian (2014), shower, wash basin & electric Superflush toilet, with plenty of storage space.

Lower saloon

L-shaped settee with cocktail cabinet, French polished panels of walnut & beveled glass cabinets, large skylight above. Extra convertible single bed with separating curtain. Double doors can separate this area from the rest of accommodation, leaving it en-suite with master cabin, if desired.

Deck saloon

Settees surround teak dining table with built in bar area, stereo unit, Mini-M extension & VHF Sailor sub-station, Vestel flat screen LCD TV and Vestrel DVD player (2012).

ACCOMMODATION EQUIPMENT:

Fitted carpets throughout guest accommodation

Vestel LCD flat screen plus DVD player

CD/radio stereo system (captain's cabin)

CD/radio stereo system (crew mess)

Pioneer CD stacker, tape/radio stereo unit with outside speaker connections (saloon)

GALLEY/LAUNDRY:

4-Burner gas cooker with Smeg electric oven (2014)

Rowenta electric microwave with rotisserie

Fridges 24V (2)

Isostar domestic style fridge/freezer

Chest freezer 10 ft³ (2014)

Fridge/freezer in other accommodation areas (3)

Icemaker (2013)

Bosch dryer (2007)

Bosch washing machine (2014)

NAVIGATION:

All Raymarine navigation equipment (2009/2012)

Raymarine E120 chart plotter (cockpit)

Raymarine E80 chart plotter (below)

Garmin Plotter

Raymarine ST60+ compass (cockpit)

Raymarine ST60+ Tridata (below)

Raymarine ST60+ graphic (below)

Raymarine ST60+ graphic (cockpit & below)

Raymarine ST60+ wind (cockpit)

Raymarine ST60+ CH wind (cockpit)

Raymarine 48nm radome antenna interfaced to plotters.

Raymarine DSC VHF radio (2023)

Simrad IS12 data marine instrument (independent system)

Sailor mini-telephone system (1998)

Furuno video depth sounder

Furuno Navtex NX300



Furuno autopilot with remote control (1998)
Sestral hand bearing compass.
Phoncom 8 Station Intercom system
Meteoliner baroscope (1999)

DECK:

CQR 105lbs anchors (2)
Kedge 80lbs folding fisherman anchor.
Lofrans gypsy anchor windlass (port)
Capstan gypsy anchor windlass (stb)
Galvanized oval link chain 0,5 inch
Torkmaster electric/hydraulic warping capstan 24V
Anchor wash 24V
Teak bathing ladder
Alloy folding teak passerelle
Deck teak dining table containing cooking gas cylinders (4) & storage space.
Fenders, ropes & warps
Sun awnings & side curtains
Deck stools (2), ample deck cushions on coach roof top for lounging
Canvas covers for all exposed varnished surfaces, plus winter covers for masts and booms.

SPARS & SAILS:

Ketch - Spars & Rigging
Bermuda ketch rig with Profurl roller furling for jib (2014)
Aluminium running poles (2) on mast tracks with twin running sails.
Masts in Columbian pine by Spencer (1992)
Bowsprit (1986) & Mizzen boom (1988)
Stainless steel running & standing rigging (1 x 19) by Spencer
Stainless steel & chromed bronze bottle screws (1992)
Shroud plates s/steel (1986)

Sails

1 x 1173 sqft. mizzen staysail, very good condition (1988)
1 x 1800 sqft. Ratsey & Lapthorne main sail, good condition (2000)
1 x 552 sqft. Doyle Italy mizzen (2014)
1 x 759 sqft. Doyle Italy furling jib (2014)
1 x 390 sqft. jib topsail, good condition
1 x Doyle main staysail (2014)
Symmetric spinnaker for use without a pole (2023)
Anderson sheet winches (6) (1998) 2 runner Anderson winches (2014)

SAFETY:

Automatic bilge pump 24V
Manual/electric high-capacity bilge pump 24V
2-Phase high-capacity bilge pump 220V
Lalizaz 6-man life rafts (2) (2020)
Life rings (2)
Horseshoe buoys with lights (2)
Inflatable life jackets (12)
Halon fire extinguisher externally operated (engine room)
Belt driven fire pump (main engine)
Additional fire extinguisher throughout ship (7)
Full set of flares
EPIRB with automatic float release (2012)
Emergency tiller



TENDERS/TOYS:

Inflatable 3,50m tender (2013)

Zodiac 4m RIB (hull from 2016)

Yamaha 25hp outboard (2013)

Yamaha 40hp outboard (2013)

SERVICE HISTORY AND CONSTRUCTION:

Built in 1933 by Camper & Nicholson, designed by Charles Nicholson in steel composite construction. All teak superstructure & planking. Backbone of English oak. Bronze fastened.

Originally constructed to Lloyds 100A1 Class

Rebuilt in 1985/86, major refit in 1998/99 including new teak deck, new deck saloon & wheel box.

2013/2014 underwent major winter refit including engine room, all tanks and plumbing, bilges and general refurbishment.

Masts and the bowsprit removed and repaired (2020)

Shaft and propellor service (2021)

Net / Gross Tonnage: 46.13 / 56.62 tons

Displacement: 107 tons

BROKERS COMMENTS:

SAHARET OF TYRE is a classic 114 ft Camper & Nicholsons ketch, originally commissioned by an American owner to combine two great passions: sailing and the acquisition of antiques throughout the Mediterranean. Built with this unique purpose in mind, she has benefited from several extensive refits that have preserved her heritage while ensuring modern reliability.

In 1986, Saharet was completely stripped to bare frames and rebuilt from the keel up. All systems—including wiring, plumbing, accommodation, and tanks—were entirely renewed. A further major refit followed in 1998, during which the decks were replaced down to the beams with 1-inch marine plywood overlaid by 1.25-inch solid teak. A new deck saloon was constructed, along with a higher bulwark and wheel box, thoughtfully designed to remain faithful to the vessel's original period style. Her rigging configuration was also returned to its original specification.

During this refit, additional framing and stringers were installed to further strengthen the hull. The windlass, chains, winches, steering gear, and navigation equipment were all replaced. Stainless steel water tanks were renewed, and a black water tank was added.

Between 2013 and 2014, Saharet underwent another major refit and has since been continuously updated and meticulously maintained, both technically and aesthetically, by the same captain for over 30 years, always to the highest possible standard.

Her present owner, after several years of careful preparation and with the support of the former captain, is now realizing a long-held dream, having crossed the Atlantic and currently enjoying sailing in the Caribbean.

This very sound, strong, and fast yacht is presented in excellent condition, and viewing is highly recommended.

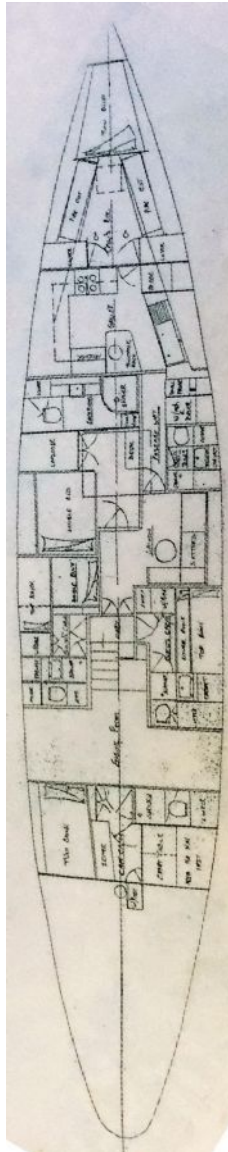
LYING:

Caribbean





Layout Plans



The particulars presented in this brochure are based on information provided by the sellers and are believed to be correct, although we cannot be liable for any inaccuracy. A prospective buyer is strongly advised to check these particulars and where appropriate and at his own expense to employ a qualified marine surveyor and / or have an engine trial conducted which if conducted by us shall not imply any liability on our part.